



# FastCover<sup>®</sup> FABRIC STRUCTURES

FABRIC COVERED STEEL FRAMED BUILDINGS

[www.fastcoverbuildings.com](http://www.fastcoverbuildings.com)

With unsurpassed quality  
and design... *It's a FastCover*





# EXCEPTIONAL VALUE: INCREDIBLY VERSATILE

## FASTCOVER PORTABLE ENGINEERED TRUSS STRUCTURES

- Fully portable, no foundation required. The FastCover 38' and 46' can be erected on any relatively level surface. You put it where you need it.
- FastCovers have the ability to adapt and grow with your business. They can easily

be extended and/or relocated to meet your ever-changing needs.

- FastCover white fabric transmits up to 80% of natural light during daylight hours. Making them a great choice in areas where no power is available.

- Engineered to meet snow, wind and rain loads in your area. Available in multiple truss spacing to meet building code.
- Versatile structures perfect for storage, maintenance, manufacturing and much more.
- FastCovers are a fraction of the cost of a permanent structure and can easily be insulated, heated, and have all the amenities that a permanent building might have.
- These FastCovers can accept a wide variety of door options up to 16' wide and 15' high.
- With an engineered double truss these FastCovers are conducive to many applications.

46'W x 72'L



38'W x 40'L



38'W x 60'L



38'W x 60'L



38'W x 104'L



46'W x 70'L



46'W x 128'L



46'W x 60'L



46'W x 96'L



42'W x 70'L



42'W x 50'L





# MAXIMIZE YOUR SPACE: UNLIMITED APPLICATIONS



## FASTCOVER ENGINEERED TRUSS STRUCTURES

- Both Traditional Hoop and Straight Leg Style FastCovers are great options to choose from depending on your particular need.
- They are cost-effective and can maximize your interior volume. Whether used for storage, maintenance or light production, they are an inexpensive alternative to a permanent structure.
- Many of these FastCovers – due to their width and height – can accommodate multiple door openings on each end.
- These structures have the option of being mounted onto any foundation of your choice.
- They are popular in the agricultural, commercial, and industrial sectors for their versatility, and are widely accepted in the mining and oil & gas sectors.
- Our Straight Leg Style Series (SLSS) can easily accommodate side entrances, making access to this FastCover significantly easier.
- The cubic volume of the Straight Leg Style Series can easily accommodate commercial racking.

60'W x 192'L



50'W x 50'L



60'W x 120'L



60'W x 84'L



60'W x 144'L



50'W x 80'L SLSS



60'W x 70'L SLSS



60'W x 440'L



72'W x 100'L





# GREAT VALUE FOR LARGE OPERATIONS: BUILT TO EXCEED YOUR NEEDS

## FASTCOVER ENGINEERED TRUSS STRUCTURES

- These FastCovers are a proven, cost-effective alternative to conventional steel buildings, especially where clear span design is valued.
- FastCovers can be erected in a short period of time, reducing construction costs, and can be easily relocated to adapt to your growing business.
- With structures ranging from 42' to 140' wide your next building can be a FastCover.
- Our Engineers provide stamped documentation across Canada and the USA in the event they are required for your jurisdiction.
- They are available in unlimited lengths with engineer-endorsed 6' to 16' truss spacing, to meet or exceed your requirements.
- Great for equipment storage, mining operations, commercial use, equestrian facilities, manufacturing plants, agriculture and much more.
- These structures accommodate large overhead doors.
- Side entrances can be easily incorporated into these massive structures.

80'W x 130'L



72'W x 144'L



72'W x 120'L



72'W x 192'L



86'W x 208'L



86'W x 60'L



100'W x 200'L



100'W x 200'L





# ENGINEERED TRUSS WIDTHS FROM 38' TO 140' UNLIMITED LENGTHS

## BASERAIL INCLUDED

38'W



46'W

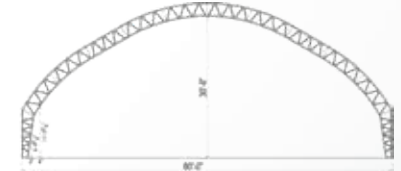


## FOUNDATION NEEDED

72'W



80'W SL



## BASERAIL OPTIONAL

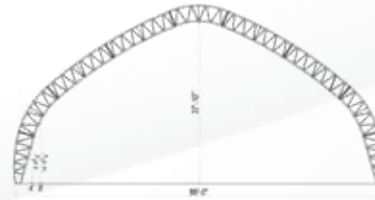
42'W



50'W



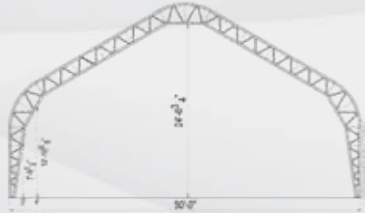
86'W



90'W



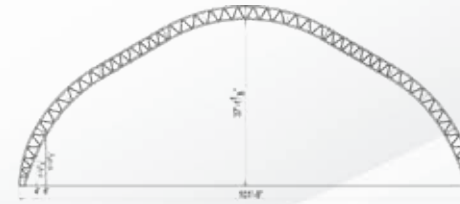
50'W SL



60'W



101'W



110'W



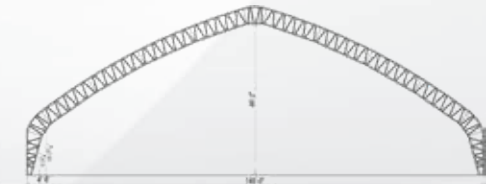
60'W SL



120'W



140'W



SCAN FOR  
MORE DETAIL ON  
BUILDING PROFILES



# UNIQUE PROJECTS: IF YOU CAN DREAM IT WE CAN BUILD IT.

- FastCover has the ability to adapt to your specific needs. With all components built in-house, our team will work with you to bring your vision to life.
- FastCovers can be mounted onto concrete blocks, concrete footings, concrete pads, rig matting, pony walls, screw anchors and shipping containers.
- With our own installation crews we have the ability to erect FastCovers in most remote areas that have limited access.

- FastCovers can accommodate most large overhead door options available in the marketplace.
- FastCovers can be insulated and heated with lighting and ventilation at a lower cost compared to permanent structures.
- Being a full service manufacturer allows us to modify our structures to meet your requirements.

- Colour options are available to match existing structures on your property.
- Graphics can be applied for brand enhancement. Ask us about it.
- Whether it is cold storage or a heated shop consider FastCover for your next project.
- These FastCovers have become the structure of choice for outdoor hockey rinks and event centres.

46'W x 64'L Custom



46'W x 128'L



60'W x 60'L SLSS



86'W x 80'L



46'W x 80'L



24'W x 24'L Compact



Bridge Deck Cover - Completely adjustable from 90' to 100' wide and lengths from 50' to 100' long.



30'W x 40'L Compact





# FASTCOVERS: BUILT WITH YOU IN MIND

- Our full time manufacturing and installation teams make us a single source for your FastCover project.
- Your FastCover fabric building specialist oversees your project from start to finish.
- Please do not hesitate to give us a call if you don't see what you are looking for. We are here to assist you and provide the information you need.
- FastCovers are adaptable to a wide range of industries.

60'W SLSS



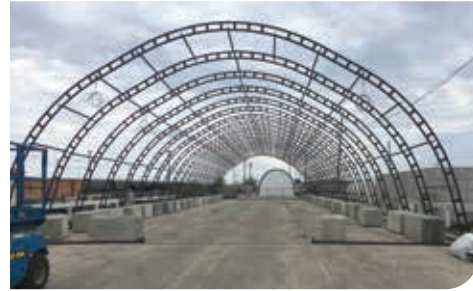
60'W



38'W



46'W



38'W



60'W



38'W



46'W



60'W



46'W



60'W



42'W





# FASTCOVER PORTABLE SINGLE AND ENGINEERED TRUSS STRUCTURES

SINGLE AND ENGINEERED TRUSS WIDTHS FROM 24' TO 32' UNLIMITED LENGTHS (BASERAIL INCLUDED)

**✓ SINGLE TRUSS CHECKLIST**

- ✓ Skilled do-it-yourself installation
- ✓ Fully portable, no additional foundation required
- ✓ Large 12' wide opening for ease of access
- ✓ Up to 14' high openings to allow for use and storage of taller items
- ✓ Economical roll-up fabric door system
- ✓ High tension fabric kits standard on all Single truss FastCovers
- ✓ Single truss commercial grade 3" steel structure
- ✓ Powder coat paint standard provides protection for longer life
- ✓ Complete packages, no additional components needed
- ✓ In stock, ready for pick up or delivery



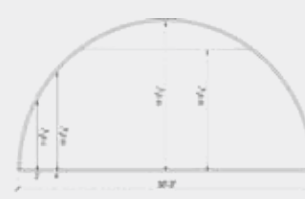
24'W COMPACT - BASERAIL INCLUDED

24'W COMPACT



24'W HI-PROFILE - BASERAIL INCLUDED

24'W HI-PROFILE



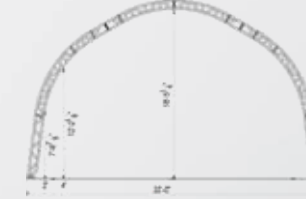
30'W COMPACT - BASERAIL INCLUDED

30'W COMPACT



30'W HI-PROFILE - BASERAIL INCLUDED

30'W HI-PROFILE



32'W - BASERAIL INCLUDED

32'W



24'W Compact



30'W Compact



- Great value for the competent do-it-yourself-er.
- The extra shop space you've always wanted.
- Perfect for keeping your recreational vehicles and gardening equipment out of the elements.
- These buildings are complete with ends, anchors, and all hardware, ready to erect.
- Various door options available.
- Built to the exact same specifications as our larger commercial structures.
- With our 15 year prorated warranty you don't have to settle for less.





## COMPANY PROFILE

For over three decades, FastCover has been supplying and installing quality fabric buildings to customers in a variety of industries. Our full line manufacturing and powder coating facility is centrally located in Winnipeg Manitoba, Canada. Portable designs allow customers to erect FastCovers without the need for costly foundations, making them easily relocated to adapt to the growth and expansion of your business or property. A full line of widths up to 140' with unlimited lengths ensures that there is a FastCover to suit your needs. FastCovers are a cost-effective alternative when compared to traditional permanent structures. And, with an industry-leading 15 year warranty, you will have peace of mind that your new FastCover will provide decades of maintenance-free service. Call 1-866-657-7172 or check us out at [fastcoverbuildings.com](http://fastcoverbuildings.com).

## FASTCOVERS ARE PROUDLY MANUFACTURED IN CANADA

### WHY YOU SHOULD CHOOSE FASTCOVER:

- We have the size you need.
- Powder coating is standard on all steel components.
- All buildings are manufactured in house to ensure a quality product.
- Stamped engineered documents are available.
- FastCovers come in a variety of colours to meet your preference.
- Optional heating, lighting and venting packages available.
- Multiple door options available to suit your needs.
- Flame retardant covers available.
- Custom structures to meet your specific application.
- Centrally located in Manitoba to service all of North America.



- 🌐 [fastcoverbuildings.com](http://fastcoverbuildings.com)
- ☎ 1-204-224-3269 | 1-866-657-7172
- 🏠 399 Ravenhurst Street  
Winnipeg MB R2C 5K3
- 🇨🇦 Proudly Canadian