



# FastCover® FABRIC STRUCTURES

FABRIC COVERED STEEL FRAMED BUILDINGS

[www.fastcoverbuildings.com](http://www.fastcoverbuildings.com)

With unsurpassed quality  
and design... *Its a FastCover*





# CORPORATE PROFILE

For over 38 years, FastCover Fabric Structures has been designing and producing quality engineered products to a wide variety of industries. Originally focused on the agricultural sector, the product line expanded to include fabric covered structures widely used not only in agriculture, but in the oil & gas, mining, storage and construction industries.

Our goal, through new product development, is to provide solutions that add “real life” value for our Customers. Customer and employee feedback is valued and appreciated and has been the driving force of new innovative solutions for the industries we serve.

FastCover is a full line manufacturer and supplier of high quality, innovative fabric covered structures that meet and exceed North American building code certification standards. FastCover’s extensive line of fabric structures range from the easily assembled commercial grade portable garage/utility package right through to the massive 86’ wide engineered welded truss structures that exceed industry standards. FastCover continues to be a leader with a vast line up of large, commercial grade fully portable welded truss structures up to 60’ wide with unlimited length that provide you with the coverage you need.

To find out more about the benefits of owning a FastCover, call or visit our website. [www.fastcoverbuildings.com](http://www.fastcoverbuildings.com)

## QUALITY & INNOVATION, COMBINED WITH VALUE

are the benchmarks that have made FastCover a recognized industry leader. Our goal over the last 38 years and into the future is to provide greater value to our customers with innovative problem solving products which better meet the needs of the ever-changing marketplace.

Membrane fabric over steel truss buildings are the leaders in growth and popularity over the last 15 years – at FastCover we are leading the way in construction techniques and designs that our customers are demanding.

Our buildings are designed with the latest modern technology that is available to maximize the strength and durability of a balanced framework.

Our research and development team apply standard techniques to bring our buildings to a physical failure point to ensure their performance in the field. We use independant engineering firms to assist and qualify our designs and performance during these tests.

## WHY CHOOSE FASTCOVER?

- All products powder coat painted for smooth exterior finish to ensure long life of fabric material and steel
- Engineered stamped drawings available for most buildings which assists in applying for permits, and insurance as required
- All building models are reviewed and tested by independent third party professional engineers to ensure structural strength and consistency in manufacturing
- FastCover portable structures continuous outer frame for a built-in foundation allows it to be moved easily without take-down in most sizes
- Warranty is 15 year pro-rated on all steel & fabric.
- Complete packages available in quoted price
- High Tension kits and storm flaps standard on every building
- Arch spacing suggested per site for appropriate building requirements
- Maximized load bearing capabilities with truss depths up to a massive 48” incorporating up to 2” structural webbing on engineered truss structures
- Double crossed purlin design on engineered truss structures to increase structural strength
- Portable Base Rail line constructed of 3” round tubing starting at 5’ arch spacing
- 12 oz multi-weave membrane cover on all buildings
- Standard size buildings in stock for immediate delivery



*“I was looking for a storage building for my boat and fishing gear that could withstand our harsh winters. Fast Cover had just what I needed that was easy to build and reasonably priced. The information I needed to order my building was simple and fast. FastCover was more than helpful to see that the building was quickly delivered. I still receive a lot of compliments for my building from people who walk in for the first time and are surprised by how bright the inside is. I am so impressed by my building that I purchased a second and was put up in one day.”*

— Richard J. Commercial Fisherman, New Brunswick, Canada

# THE FASTCOVER ADVANTAGES

## MODULAR DESIGN, EASY ASSEMBLY

The FastCover structures are pre-engineered and are modular in design – allowing for easy erection and several buildings to be “connected” to each other, offering unlimited lengths.

Simplicity is the rule, with no heavy equipment required for putting the building up, and no permanent foundation required with our Fast Cover Portable product lines – allowing the ability to relocate the building very easily. Typical installation time is approximately 30 person hours on our smaller buildings.

## FASTCOVER POWDER COAT PAINT

All FastCover products are finished with our distinctive FastCover Brown Powder Paint that is baked on. This finish and color have become well known in the industry for its long lasting quality, which provides a glass-like, non-abrasive, smooth finish to prevent any premature wear in the fabric cover.

FastCover has partnered with the leading paint suppliers in the industry to develop and continually refine the FastCover Brown Powder Paint and its application process which includes baking the powder onto the steel, giving a longer life to your FastCover.

By starting with selecting only quality structural steel, coupled with a multi-stage wash and cleaning system – we ensure that the surface is ready to accept the FastCover Powder Paint. The products are all baked up to 450 degrees, resulting in an extremely durable corrosion and abrasion resistant finish that will stand the test of time in the field. The FastCover Epoxy Coating formulation is also a sought after option that provides longer life to the steel in high corrosion facilities. This process has been tested to last longer in high corrosion buildings than any galvanizing process.

## FASTCOVER DESIGN

The round over or hoop design has been proven to be the configuration that provides the best performance and longevity of the main cover. The design of the “New” Straight Leg Super Structure (SLSS) series maximizes the available volume of cubic feet giving customers even more usable space. Many of our buildings have been designed to use common platforms allowing us to pass those efficiencies back to the customer. We design with the customer in mind, ensuring our structures meet or exceed your expectations for value and quality. Our name is on each FastCover and we want to make sure you remain the proud owner.

## HIGH SOLAR ENERGY VALUES & HIGH LIGHT TRANSFER

Our 12 ounce 23 mil **NovaShield II** membrane fabrics with **Armorkote** are prime materials specially formulated for our building designs, ensuring many years of trouble free performance. During daylight hours, our structures will be noticeably warmer in the winter months and clearly cooler in the summer months than a conventional building – and with a massive light transfer of up to 80%, FastCover structures allow for a high degree of comfort and excellent working conditions during daylight hours.

## VERSATILITY

FastCover structures are multifunctional and over the years have been used by individuals for personal use right through to large corporations for commercial use. Storage of equipment, inventory or commodities such as hay or feed, special events, manufacturing, maintenance, and riding arenas are just a few of the uses. Rapid installation, ease of relocation or extension, and lower operational costs make the FastCover structure the preferred choice of customers. Versatility is a significant benefit with each customer, knowing they have the flexibility to maximize the hundreds of uses for our Fabric Membrane Structures.

## FASTCOVER STRUCTURES

FastCover has a comprehensive line of fabric structure solutions to meet your needs. The portable garage/utility package is the perfect solution where a moderate area is required, space is limited and portability a must. The portable single truss 24’ and 30’ wide FastCovers are a great solution in standard and custom lengths. The portable engineered truss line up provides a range of widths from 26’ up to 46’ wide with unlimited lengths. These structures, being fully engineered, portable, with tremendous storage capabilities, are one of the most popular and functional structures in the industry. Finally, The FastCover engineered truss structure line up has widths from 42’ up to 86’ wide, to suit most needs. Our engineering and research & development department continue to upgrade and modify our product line with the great feedback from our customers use of FastCovers in the field. **Check out the “New” SLSS series 50’ & 60’ wide structures on Page 7.**

## WARRANTY

All FastCover single and engineered truss structures come with an industry leading 15 year pro-rated warranty on the main cover and the steel, to provide peace of mind for years of trouble free service with low maintenance and operating costs. The FastCover Garage/Utility packages comes with the same comprehensive warranty for a 5 year period.

FastCover wants you to enjoy your structure for many years. Care must be taken at all times to ensure the covers are tight to the frame members and not allowed to vibrate in windy conditions. It is important to install and maintain your FastCover in accordance with the warranty to ensure we can assist you. Our name is on every structure we sell and install therefore it is extremely important that we assist you in any way to ensure your FastCover looks and functions well for years to come.



A660 is a Canadian standard used in the steel building industry. This is a tracking program to ensure that the certified manufacturers follow protocol on manufacturing and also have minimum steel specifications that need to be followed. FastCover continues to be certified.



The Canadian Welding Bureau is a not-for-profit certification and registration organization for companies involved in the welding of steel structures. Welders in Canada are required to be retested every two years by the Canadian Welding Bureau. FastCover welders continue to be certified.



## PORTABLE 24' WIDE SINGLE TRUSS STRUCTURES

FastCover now offers a Compact & Hi Profile Version of the 24 Wide  
24' x 32' 24' x 48' High Profile c/w Fabric Roll-up Door: Instock; Ready for Pick-up

Portable Compact 24' wide



**744 SQ FT**

23' 3" x 32'

**1116 SQ FT**

23' 3" x 48'

FastCover 24 wide compact single truss structures are the best value for all your portable storage requirements. Whether you are storing your camper, 5th wheel, boat, ATV, motorcycle or vehicle, you will be completely satisfied with the size, durability and light transfer in these FastCovers. It's unique design allows for a variety of openings to suit your needs. With up to 12' wide and 11' high the fabric roll up door c/w ball bungees keeps it securely closed. The compact's lower profile nestles nicely into your property while maximizing your storage needs. Powdercoat painted commercial grade 3" steel for both the structure and the portable baserail, along with UV inhibited, high density polyethylene woven 12 oz. fabric and hi-tension kits, ensure years of maintenance free service.

Portable Hi Profile 24' wide



**768 SQ FT**

24' x 32'

**1152 SQ FT**

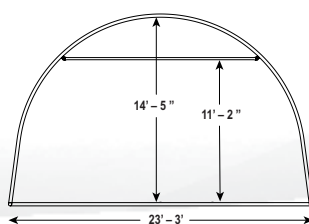
24' x 48'

FastCover 24 wide Hi Profile single truss structures are the best value for all your portable storage requirements. These Hi Profile structures are designed to store and maintain any road-going vehicle meeting federal regulations limited to a height of 4.15 metres (13.6 ft.) such as semi tractor trailers, grain or gravel trucks, motorhomes, 5th wheels or tall equipment. It's unique design allows for a massive 14' h x 12' w fabric roll up door c/w ball bungees to keep it securely closed. Powdercoat painted commercial grade 3" steel for both the structure and the portable baserail, along with UV inhibited, high density polyethylene woven 12 oz. fabric and hi-tension kits, ensure years of maintenance free service.

### SINGLE TRUSS CHECKLIST

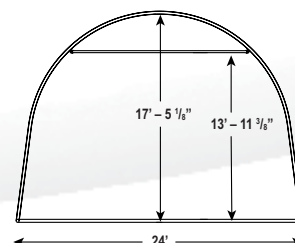
- ✓ Skilled Do-it-yourself Installation
- ✓ Fully portable up to 1152 sq ft, requiring no foundation
- ✓ Large 12' wide opening for ease of access
- ✓ 11' and 14' high openings to allow for use and storage of taller items
- ✓ Economical roll-up fabric door system
- ✓ High tension fabric kits standard on all Single truss FastCovers
- ✓ Single truss commercial grade 3" steel structure
- ✓ Powdercoat paint standard provides protection for longer life
- ✓ Complete packages, no additional components needed
- ✓ In stock, ready for pick up or delivery

24' Compact



- 12' wide x 11' high fabric manual roll-up door (hand crank mechanism)
- 14'8" in height at peak of structure
- Width of structure is 23'3" (outside dimension of portable baserail)
- 8' wide truss spacing (standard lengths are 32' and 48' (available in any length in 8' increments))
- Framing for walk-in-door included
- Fully portable, no permanent foundation required, easily erected anywhere.
- Full ground apron to seal structure
- All hardware, door ends, solid ends and anchors included, ready to erect.
- Complete FastCover consists of 1 building crate (LxWxH: 144"x48"x30") & 1 baserail bundle 246" long (width & height vary)

24' Hi Profile



- 12' wide x 14' high fabric manual roll-up door (hand crank mechanism)
- 17'6" in height at peak of structure
- Width of structure is 24' (outside dimension of portable baserail)
- 8' wide truss spacing (standard lengths are 32' and 48' (available in any length in 8' increments))
- Framing for walk-in-door included
- Fully portable, no permanent foundation required, easily erected anywhere.
- Full ground apron to seal structure
- All hardware, door ends, solid ends and anchors included, ready to erect.
- 24x32 and 24x48, IN STOCK Ready for Pick-up
- Complete FastCover consists of 1 building crate (LxWxH: 144"x48"x30") & 1 baserail bundle 246" long (width & height vary)

## PORTABLE 30' WIDE SINGLE TRUSS STRUCTURES

FastCover now offers a Compact & Hi Profile Version of the 30 Wide

30' x 45' 30' x 65' Compact c/w Fabric Roll-up Door: Instock; Ready for Pick-up

Portable Compact 30' wide



**1350 SQ FT**

30' x 45'

**1950 SQ FT**

30' x 65'

FastCover 30 wide single truss structures are an excellent value for all your portable storage requirements. Whether you are using the FastCover 30 for agricultural, industrial or recreational storage, you will be completely satisfied with size, durability and light transfer in these FastCovers. It's "tried & true" hoop style design allows for a substantial 12' h x 12' w fabric roll up door c/w ball bungees to keep it securely closed. Need a door on both ends, just ask. Powdercoat painted commercial grade 3" steel for both the structure and the portable baserail, along with UV inhibited, high density polyethylene woven 12 oz. fabric and hi-tension kits, ensure years of maintenance free service.

Portable Hi Profile 30' wide



**1350 SQ FT**

30' x 45'

**1950 SQ FT**

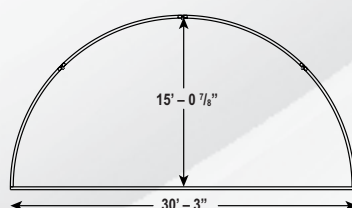
30' x 65'

FastCover 30 Hi Profile wide single truss structures are an excellent value for all your portable storage requirements. Whether you are using the FastCover 30 for agricultural, industrial or recreational storage, you will be completely satisfied with size, durability and light transfer in these FastCovers. It's "Hi Profile" hoop style design allows for a massive 14' wide x 14' high fabric roll up door c/w ball bungees to keep it securely closed. Need a door on both ends, just ask. Powdercoat painted commercial grade 3" steel for both the structure and the portable baserail, along with UV inhibited, high density polyethylene woven 12 oz. fabric and hi-tension kits, ensure years of maintenance free service.

### SINGLE TRUSS CHECKLIST

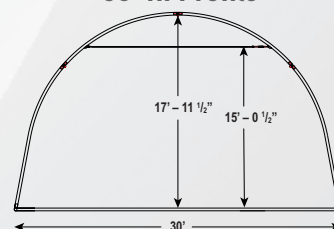
- ✓ Skilled Do-it-yourself Installation
- ✓ Fully portable up to 1950 sq ft, requiring no foundation
- ✓ Large 12' wide opening for ease of access
- ✓ 12' and 14' high openings to allow for use and storage of taller items
- ✓ Economical roll-up fabric door system
- ✓ High tension fabric kits standard on all Single truss FastCovers
- ✓ Single truss commercial grade 3" steel structure
- ✓ Powdercoat paint standard provides protection for longer life
- ✓ Complete packages, no additional components needed
- ✓ In stock, ready for pick up or delivery

30' Compact



- 12' wide x 12' high fabric manual roll-up door (hand crank mechanism)
- 15'3" in height at peak of structure
- Width of structure is 30'3" (outside dimension of portable baserail)
- 5' wide truss spacing (standard lengths are 45' and 65' (available in any length in 5' increments))
- Framing for walk-in-door included
- Fully portable, no permanent foundation required, easily erected anywhere.
- Full ground apron to seal structure
- All hardware, door ends, solid ends and anchors included, ready to erect.
- 30x45 and 30x65, IN STOCK Ready for Pick-up
- Complete FastCover consists of 1 building crate (LxWxH: 144"x48"x36") & 1 baserail bundle 246" long (width & height vary)

30' Hi Profile



- 14' wide x 14' high fabric manual roll-up door (hand crank mechanism)
- 18'2" in height at peak of structure
- Width of structure is 30' (outside dimension of portable baserail)
- 5' wide truss spacing (standard lengths are 45' and 65' (available in any length in 5' increments))
- Framing for walk-in-door included
- Fully portable, no permanent foundation required, easily erected anywhere.
- Full ground apron to seal structure
- All hardware, door ends, solid ends and anchors included, ready to erect.
- Complete FastCover consists of 1 building crate (LxWxH: 144"x48"x36") & 1 baserail bundle 246" long (width & height vary)

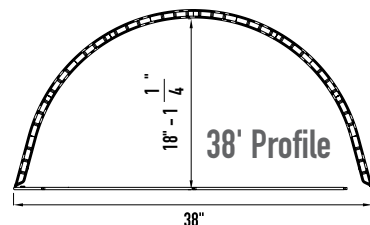
# FASTCOVER PORTABLE 26' 32' 38' & 46' WIDE ENGINEERED TRUSS STRUCTURES

Available in popular sizes or unlimited lengths to meet your storage needs with engineer endorsed 6' and 16' truss spacing to meet or exceed your geographical location requirements.

## Portable 38' Wide



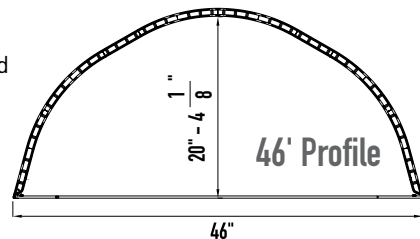
FastCover 38 wide engineered welded truss structures maximize your space requirements, Plus they provide the convenience of being fully portable. This great value FastCover is the building of choice for those customers wanting a structurally engineered FastCover at exceptional value.



## Portable 46' Wide



FastCover 46 wide engineered welded truss structures incorporate the same truss design as the 38 but add the convenience of 8 more feet of width to give you the increased space you need. This massive 46' wide FastCover still provides the convenience of being fully portable. This FastCover is the building for those customers wanting that additional square footage in a structurally engineered FastCover. We've designed it to vertically increase the sides to give you maximum usage.

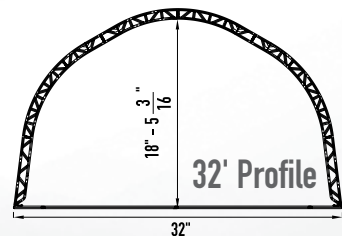


## Portable 32' Wide



FastCover 32 wide engineered welded truss structures incorporate the same truss design as the 26 but adds the convenience of 6 more feet of width to give you the increased space you need. This robust 32' wide FastCover still provides the convenience of being fully portable. This FastCover is the building for those customers wanting that additional square footage in a structurally engineered FastCover with the strength and durability needed in a tough environment. We've designed it to vertically increase the sides to give you maximum usage.

*Also available in a 26' wide structure.*



Solid and Door end walls can be custom tailored to meet your door opening requirements, be it a fabric roll-up door, AccuTrack steel reinforced fabric door, double door, or your door of choice. Optional 6' to 16' truss spacing available dependant on potential National Building Code or site specific requirements. Powdercoat painted commercial grade steel for both the structure and the portable baserail, along with UV inhibited, high density polyethylene woven 12 oz. fabric and high tension kits, ensure years of maintenance free service.

### PORTABLE ENGINEERED TRUSS CHECKLIST

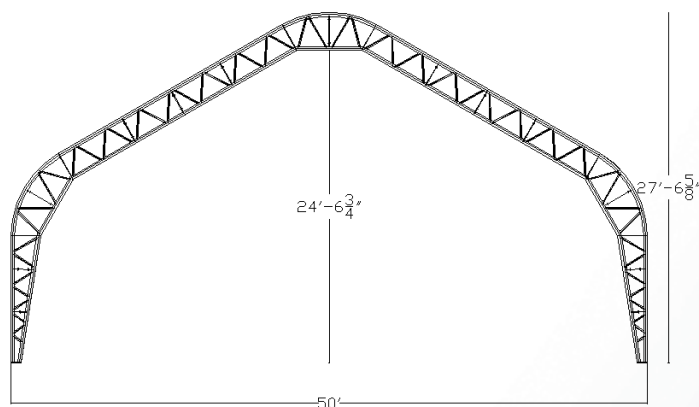
- ✓ Pre-engineered structures with truss spacing from 6' to 16'
- ✓ Fully portable up to 46' wide, no foundation required
- ✓ Powdercoat paint standard provides protection for longer life
- ✓ Designed to accept a wide variety of your choice of doors
- ✓ Snow load cables to meet or exceed building codes
- ✓ Easy to work in, with up to 80% light transfer



## FASTCOVER PORTABLE 50' & 60' STRAIGHT LEG SUPER STRUCTURES (SLSS)

The SLSS series is now available in 2 popular widths and unlimited lengths to meet your needs with engineer endorsed 6' to 16' truss spacing, meeting or exceeding your geographical locations requirements for snow, wind and rain loads.

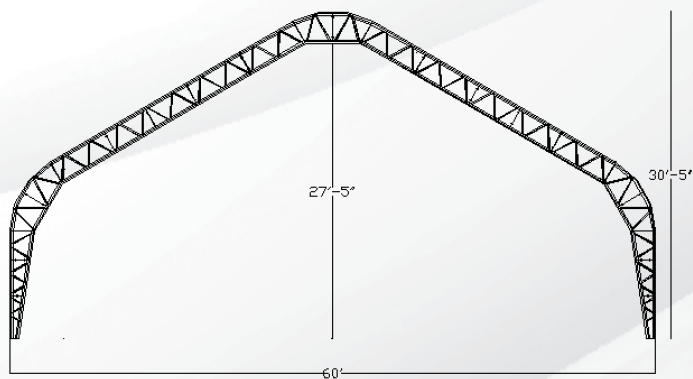
Portable 50' Wide



FastCover introduces 2 completely new structures to meet customer demand. The FastCover SLSS Series (Straight Leg Super Structure) series is available in 50' and 60' widths, and, of course, unlimited lengths. Both SLSS series FastCovers are available in "Portable" models. The FastCover Straight Leg Super Structure (SLSS) has been designed to maximize the interior volume with a massive 10' high exterior straight wall truss leg. This feature virtually eliminates wasted interior space by allowing customers to get closer than ever to the interior wall with equipment placement, vehicle storage, or warehouse racking. The SLSS series is designed for maximum width and height openings on end walls to accommodate more equipment, product or livestock. At 10' high, the truss leg on the SLSS series easily accommodates side entrances making access to this FastCover significantly easier.

The portability of the SLSS Series make them one of the most versatile and sought after structures that can be erected almost anywhere, without the need for a costly foundation, due to its ability to be erected on any relatively level surface area when incorporated with our anchoring system. The beauty of portability allows customers to re-locate FastCover buildings to a location that best suits them. An initial location may no longer be suitable for commercial, mining, farm or ranch enterprises and a re-locatable building allows for FastCover buildings to grow along with the business. Portability also means that when customers no longer have need for their FastCover, re-sale value becomes very important. FastCovers have the ability to provide decades of service, resulting in great re-sale value.

Portable 60' Wide



Like all FastCover buildings, the SLSS series is available in a variety of truss spacing to meet the demands of North American snow, rain and wind loads. Powdercoat paint is standard on all FastCovers. Powdercoating is a great rust inhibitor and ensures years of service. All FastCover buildings, big or small, incorporate High Density Polyethylene fabric membrane with UV inhibitors, in 12 oz. weight and 23 mils thickness to provide protection for equipment, product and livestock against the elements.

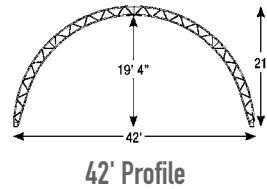
- Optional door requirements available
- Full storm flaps
- Complete ground apron
- All hardware included
- Commercial grade ground anchors included
- Optional baserail brackets to mount portable building to an existing foundation
- Door end and solid end wall covers available
- Optional venting solutions
- No permanent foundation required
- Instruction guide
- Powdercoat paint standard on all FastCovers
- Easily installs anywhere
- Install a door (framework & door optional)
- 2-4 week lead time dependant on options
- Varying lengths readily available
- Call for sizes and shipping weights

# FASTCOVER 42' 50' 60' 72' & 86' WIDE ENGINEERED TRUSS STRUCTURES

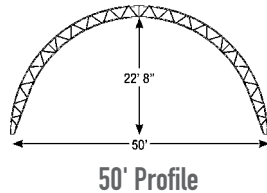
Available in unlimited lengths with engineer endorsed 6' to 16' truss spacing to meet or exceed your requirements, be it equipment storage, riding arena, livestock handling or commodity storage. FastCover covers them all!



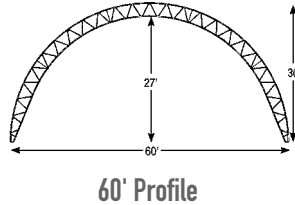
42' Wide



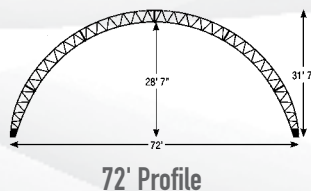
50' Wide



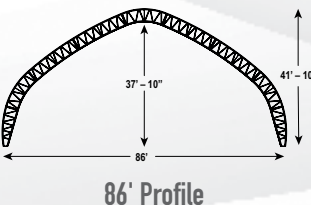
60' Wide



72' Wide



86' Wide



The FastCover engineered welded truss structures are extremely versatile allowing you to maximize your space requirements. Like all FastCovers, this line up combines industrial-grade steel powdercoat painted frames and engineered fabric. These popular widths are a proven alternative to conventional buildings especially where clear-span design is valued. FastCover engineered truss structures available in 6' to 16' truss spacing meet the same stringent building codes as conventional buildings and are designed to meet and/or exceed professional engineer certification. These FastCovers are designed to work with a multitude of foundations. Concrete footings, concrete walls, concrete blocks, screw pile type steel anchors, wooden posts or wooden pony walls are some of the more common types of foundations to secure your FastCover to the ground. (see page 9)

Solid and Door end walls can be custom tailored to meet your door opening requirements, be it a fabric roll-up door, AccuTrack reinforced fabric door, double door, or your door of choice. Standard powdercoat painted industrial grade steel for the structure, along with UV inhibited, high density polyethylene woven 12 oz. fabric and hi-tension kits, ensure years of maintenance free service.

- Optional door requirements available
- Full storm flaps
- Complete ground apron
- All structure hardware included
- Foundation options available
- Site specific engineering available
- Optional Door and/or solid end walls available
- Optional venting solutions
- Instruction guide
- Powdercoat paint standard on all FastCovers
- Easily installs on your foundation of choice
- Call for availability, sizes and shipping weights



# CHOOSE YOUR DOORS

All FastCover complete building packages come standard with one fabric roll-up door and one solid end wall. FastCover has a variety of options allowing you to maximize the use of your new FastCover. The affordable fabric roll-up door, our AccuTrack steel reinforced fabric door system, metal bi-fold doors to maximize your opening, standard garage type doors or any alternate door system of your choice can be easily mated to your FastCover.

Steel Garage Door



Fabric Roll-up Door



Steel Roll-up Door



BiFold Door



AccuTrack Steel Reinforced Fabric Roll-up Door



Side Entrance Door

# CHOOSE YOUR FOUNDATION

With our continuous outer base rail frame, FastCover portable structures require no permanent foundation. FastCover screw anchors for ground mount applications allow your portable structure to be erected almost anywhere. For a more permanent foundation FastCover recommends a variety of options including concrete footings or piers, concrete block foundations, screw piles, or wood posts. To add additional height to your FastCover many customers erect concrete, wood or steel pony walls of varying heights. You can also mount our portables onto more permanent foundations with the use of the FastCover base rail bracket.

Portable Ground Mount  
using Concrete Blocks



Portable Ground Mount  
using Screw Anchors



Engineered Truss  
Wood Post Mount



Engineered Truss  
on Concrete Blocks



Portable on Concrete Blocks



Engineered Truss on Poured  
Concrete Footing/Wall



Portable using BaseRail Brackets  
on Concrete Blocks



Engineered Truss on Screw Piles

# OPTIONS

## FABRIC OPTIONS

Our 12 ounce 23 mil NovaShield II membrane fabrics with Armorkote are prime materials especially formulated for our building designs, ensuring many years of trouble free performance. A fire retardant membrane is also available for special applications.

## FIRE RETARDANT

IPG is the only polyethylene membrane manufacturer to successfully combine long-life UV resistance with flame retardancy. NovaShield products pass the most demanding certification standards, including:

- California Fire Marshall
- ASTM E84 (Class 1)
- NFPA 701 (Large and Small Scale)
- CAN/ULC S-109 (Large and Small Scale)
- UBC31-1
- FAR 25.863(a) Appendix F, Part 1
- EN13501.1 (B.s1.d0)
- DIN4102 (B1)



## STANDARD FABRIC

FastCovers come standard with a white main cover and green stripes on each end, but many other colors are available as a special order. Designed to last 20 plus years.



## OPTIONAL ENGINEER STAMPED

Our FastCover buildings have been pre-engineered and tested by independent engineering firms. They have been designed to withstand North American wind, rain and snow loads.

## PRE-ENGINEERING

Our complete building line has been tested by independent engineering firms, and we have designed these packages to withstand the most challenging of geographical conditions.



## VENTILATION

Any after-market vents can be installed virtually anywhere in the building to increase ventilation. Your FastCover representative will be able to assist you with any venting requests.

## ARCH SPACING

Arch spacing on the FastCover Welded Truss Buildings ensure added strength. These buildings are designed for area specific wind, rain and snow loads. We recommend truss spacing to meet the needs of your location and CSA certified steel components – giving you a better building!



## END WALL DESIGN

End wall trusses are all engineered to balance load and maximize the strength of the building. Reducing end wall flapping in the wind dramatically reduces end wall fabric wear. Our fabric is attached to the steel end wall frame and supports at multiple points using webbing and high tension kits.



## INNOVATIVE SOLAR TECHNOLOGY

For over two years, FastCover has been developing a solar energy package to provide electrical solutions for buildings where there is no available power source. FastCover now makes it possible to light your structure, or power your door of choice with as little as just one solar panel package! This technology has been vigorously tested over two winters with -40 degree weather.



FastCover is the first fabric manufacturer to offer this technology! A solar solution will cost a fraction of having hydro provided to a building and eliminate monthly electricity bills.





# CLIENT TESTIMONIALS

## AT FASTCOVER WE KNOW FABRIC BUILDINGS



We purchased our first structure from Fast Cover back in 2016 and are now up to 8 structures located on 3 of our northern Ontario mining/exploration properties where they are used to securely store the core samples out of the elements. The structures needed to be able to withstand the harsh winters yet be easily transported and erected at even our remote sites. Fast Cover assured us that they could deliver and erect the portable structures to our sites on time and budget. Fast Cover's company rep looked after our account from sale through delivery to the logistics of the construction schedule and all went smoothly. We are very happy with both the product and service that we received from Fast Cover and look forward to working with them again in the future.

— Laird T, Manager, Mineral Projects & Properties



I am the owner of a growing moving business. I was looking at options for a space to store my trucks, materials, and equipment. A family member who had recently purchased a similar building referred me to FastCover for their easily assembled, well-constructed fabric structures, and superior customer service. The FastCover structure I purchased was affordable, allowing me to grow my business in other ways, and has proved itself very durable, requiring little repair and maintenance. As my crew and I were assembling the building ourselves, we ran into an issue raising the tarp; we called FastCover and they promptly sent over two knowledgeable installers to assist us and we were done in no time. I would not hesitate to recommend FastCover to anyone. The staff were courteous and helpful, and they supplied a great quality product that was perfect for my company. If you are considering a structure from FastCover, take it from me... there is no better service out there.

— Jacques B, Owner, Commercial Moving Business



WE ARE ONLINE AT:  
[www.fastcoverbuildings.com](http://www.fastcoverbuildings.com)



itsafastcover



FastCover



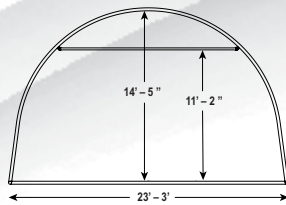
I needed extra storage and with my new FastCover I am now able to use my other building for my business. I heard about FastCover from a friend and when I called the sales person, she was very pleasant and went the extra mile to make sure everything went well for me. FastCover was the only company who asked me what I wanted instead of telling me what I wanted. My new Portable FastCover doesn't require any type of cement footing which made it more cost effective. I installed it myself and anytime I had any questions they were just a phone call away. You will get good service here because they make you feel like a person and not just another sale. I have had my FastCover for one winter now and it stood strong in 120km. Very Impressive!

— Darell A. Prince Edward Island, Canada

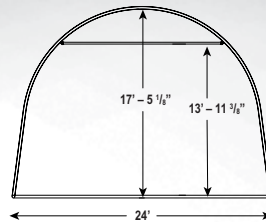
# FASTCOVER PROFILES

## PORTABLE SINGLE TRUSS

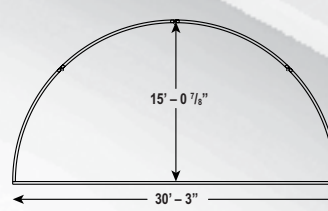
24' Compact Profile



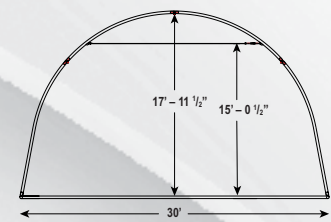
24' Hi Profile



30' Compact Profile

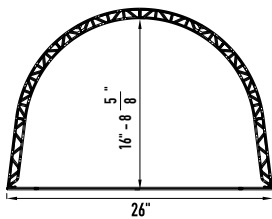


30' Hi Profile

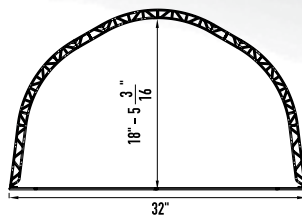


## PORTABLE WELDED TRUSS

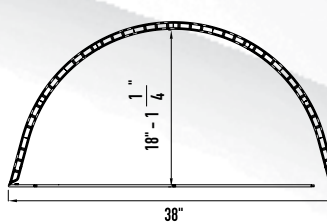
26W



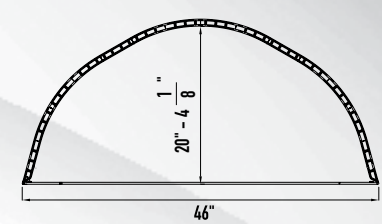
32W



38W

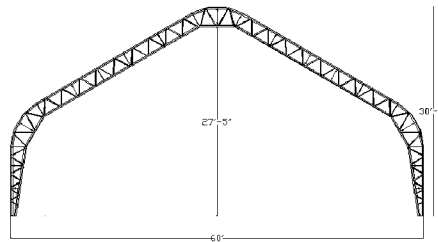
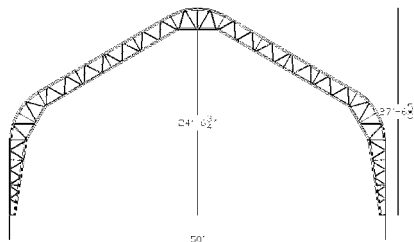


46W



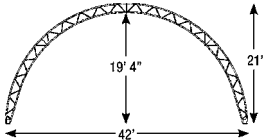
## PORTABLE WELDED TRUSS

NEW

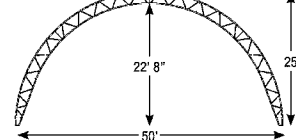


## WELDED TRUSS (FOUNDATION REQUIRED)

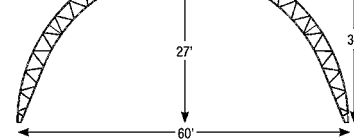
42W



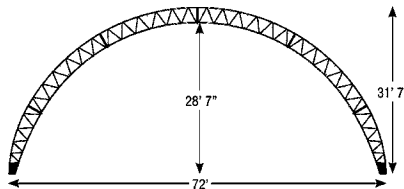
50W



60W



72W



86W

